



Certificate of Analysis

UElandy Inc.

Room 302, Building 1, No.18& Chunyao Road,

Xiangcheng District, Suzhou,

Jiangsu Province P.R, 215143 China

www.uelandy.com

Refer to website for regional contact information.

Product Name:	S2 buffer for UE-MN-P-500,150mL	Lot ID:	21110901-01
Catalog Number:	UE-MN-P-500-S2	Expiration Date:	11/08/2024

Quality Control

Spectrophotometric Analysis

- Acceptable Range for $A_{260}/A_{280}=1.8\pm0.15$.
- Comparison of the Test Sample to a previously tested Standard. Acceptable range for Test Sample is $\leq \pm 10\%$ of Standard, based upon spectrophotometric analysis. The "Standard" is a previously tested and validated sample.

Restriction Analysis

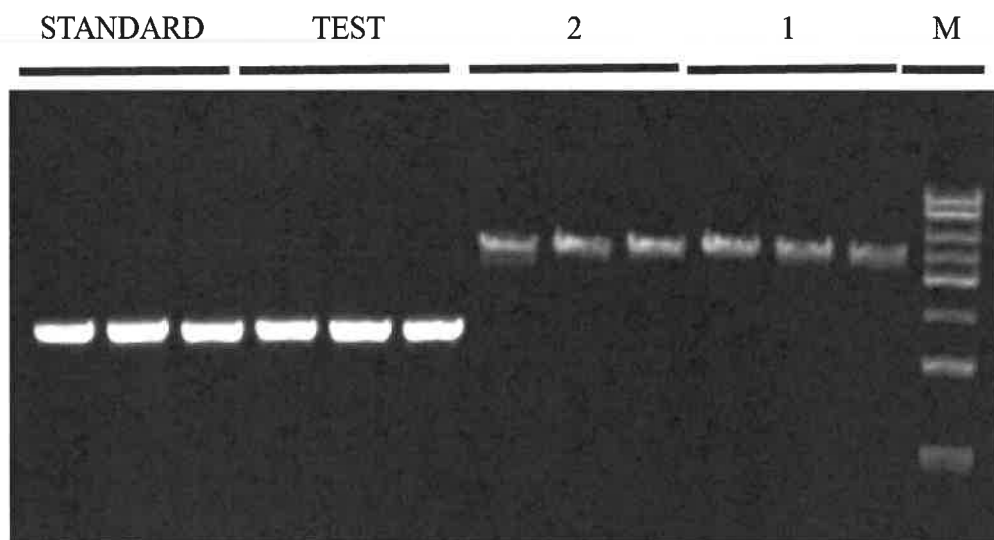
- 1 μ g of plasmid is digested to completion by EcoRI

Electrophoretic Analysis

- Agarose gel electrophoresis of the samples exhibits a defined plasmid band with no degradation.
- Agarose gel electrophoresis of the samples exhibits no contaminating RNA.
- Agarose gel electrophoresis of the samples exhibits no contaminating bacterial genomic DNA.

Gel Image and Test Data

Item	Test Date						Sample
	1	2	3	4	5	6	
A260	0.442	0.547	0.513	0.401	0.448	0.439	1,2,3 are duplicate Test Samples 4,5,6 are duplicate Standards
A280	0.247	0.286	0.281	0.214	0.244	0.254	
A260/A280	1.786	1.916	1.823	1.876	1.836	1.728	
Yield (μ g)	6.628	8.209	7.698	7.012	7.529	6.991	
Electrophoresis	✓	✓	✓	✓	✓	✓	PASS
No visible RNA	✓	✓	✓	✓	✓	✓	
Endonuclease digest	✓	✓	✓	✓	✓	✓	
[Test Sample/Standard] Yield Difference	4.658%						PASS



UElany Inc. warrants and represents that all inspections and testing for the article described above have been performed at UElany Inc. QC laboratory located on-site at the manufacturing plant. UElany Inc. manufacturing facility is located at Room 302, Building 1, No.18& Chunyao Road, Xiangcheng District, Suzhou, Jiangsu Province P.R, 215143 China

(QC Inspector) *Min Ma* 14-04-2022

(Approver) *Bin Hua Yu* 14-04-2022